

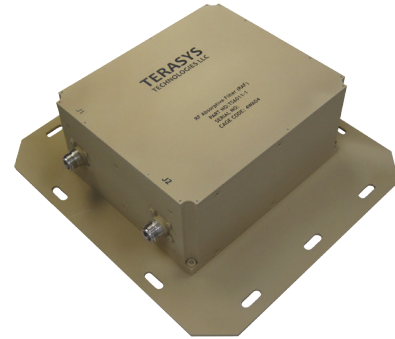
# TS6011

PowerMatch™  
Absorptive Notch Filter



## FEATURES

- 1 dB insertion loss
- 90 dB stopband rejection
- VSWR < 1.5
- 100 W CW power handling



## DESCRIPTION

The TS6011 is an high power absorptive notch filter, providing 50-ohm port impedances and maximum notch depth under all load conditions. This filter is typically placed at the output of a high power transmitter.

## RF PERFORMANCE

Parameter	Sym	Min	Typ	Max	Units	Comments
Impedance	$Z_0$		50		$\Omega$	
3 dB Notch Bandwidth	$BW$	240		260	MHz	
Passband	$B_{PASS}$			500	MHz	
Passband Insertion Loss	$IL_P$		1.0	1.5	dB	
Stopband Insertion Loss	$IL_S$	80	90		dB	
Passband CW Power Handling	$P_{IN,P}$	100			W	
Stopband CW Power Handling	$P_{IN,S}$	25			W	
VSWR			1.2	1.5		

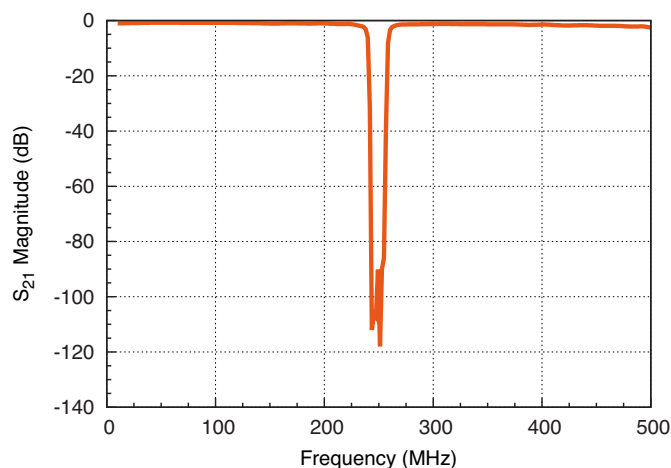


Fig. 1 : Typical measured  $S_{21}$  response

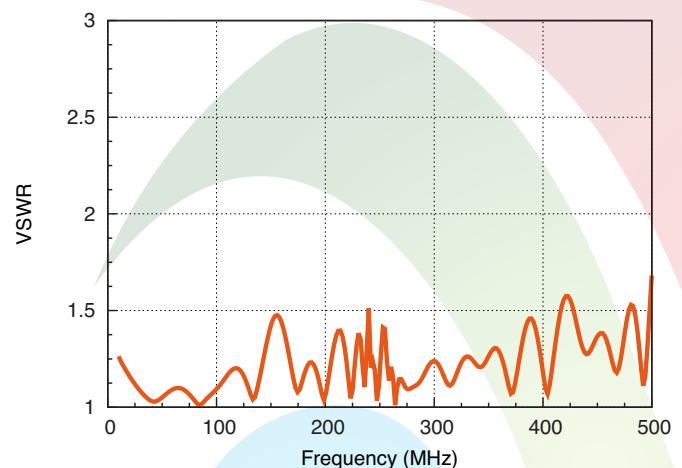


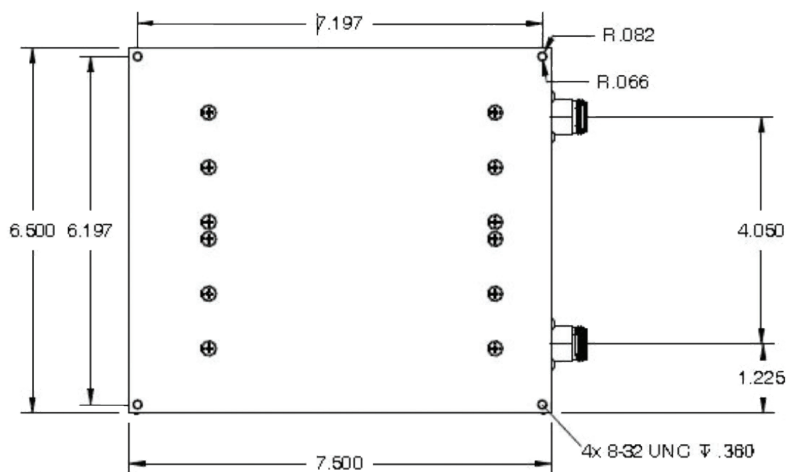
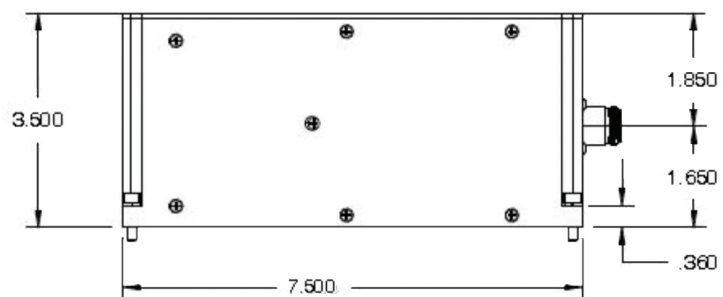
Fig. 2 : Typical measured VSWR response

# TS6011

PowerMatch™  
Absorptive Notch Filter



## MECHANICAL



Product is shown with type-N(f) connectors. Other connector styles are available upon request.